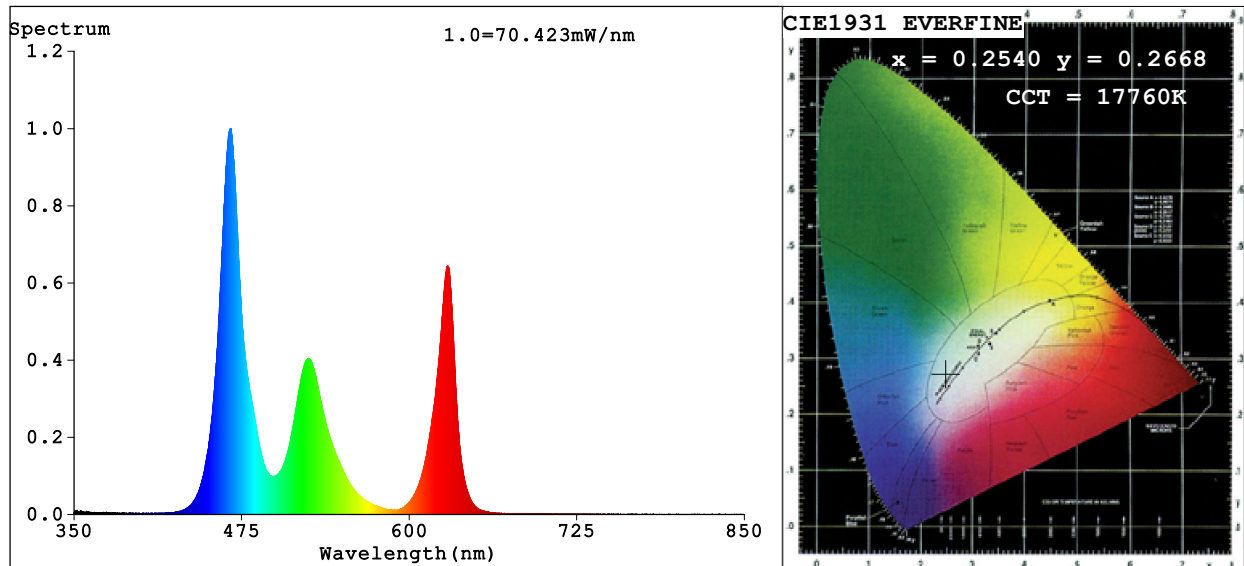


## Spectrum Test Report



### Color Parameters:

Chromaticity Coordinate:  $x=0.2540$   $y=0.2668$   $u'=0.1785$   $v'=0.4217$

CCT=17760K (Duv=0.0064) Dominant WL:Ld =479.8nm Purity=32.9%

Ratio:R=21.9% G=65.3% B=12.8%; Peak WL:Lp=466.7nm FWHM=17.5nm

Render Index:Ra=52.8 CRI=48.9 TM30:Rf=49 Rg=109

R1 =36 R2 =61 R3 =81 R4 =58 R5 =59 R6 =62 R7 =58

R8 =8 R9 =0 R10=21 R11=61 R12=59 R13=38 R14=84 R15=16

### Photo Parameters:

Flux = 816.9 lm Eff. : 45.74 lm/W Fe = 3.457 W

### Electrical parameters:

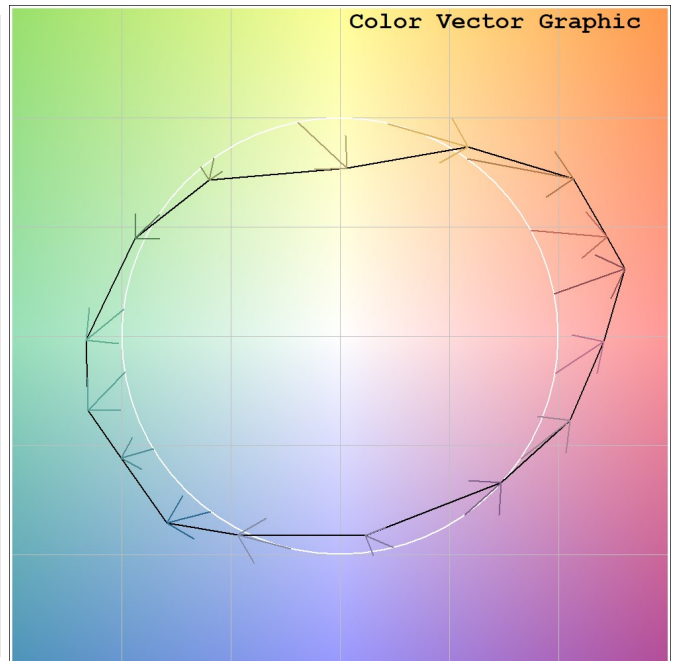
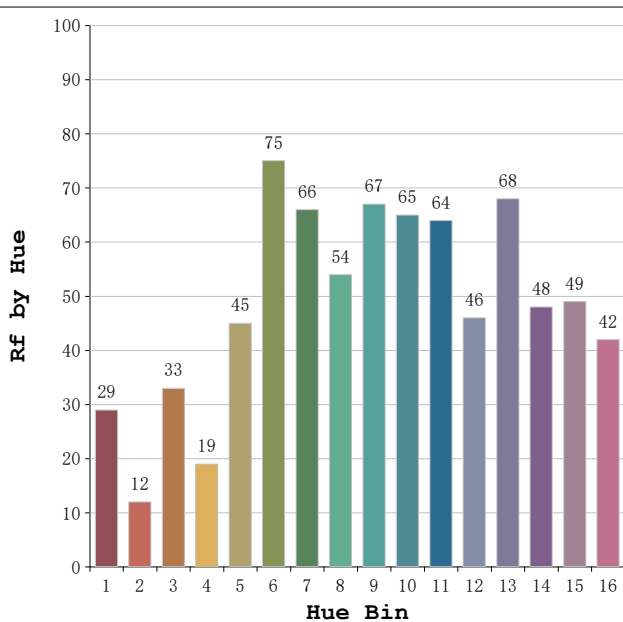
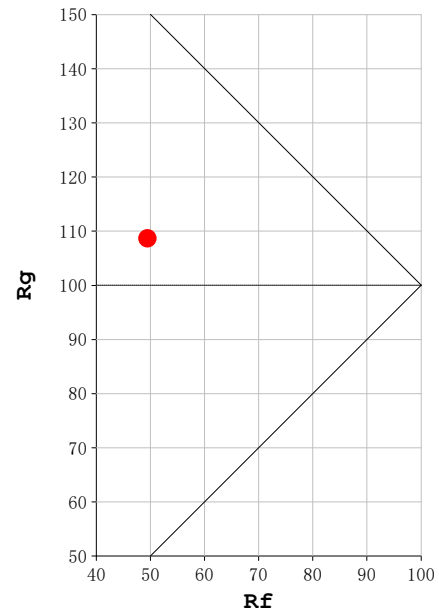
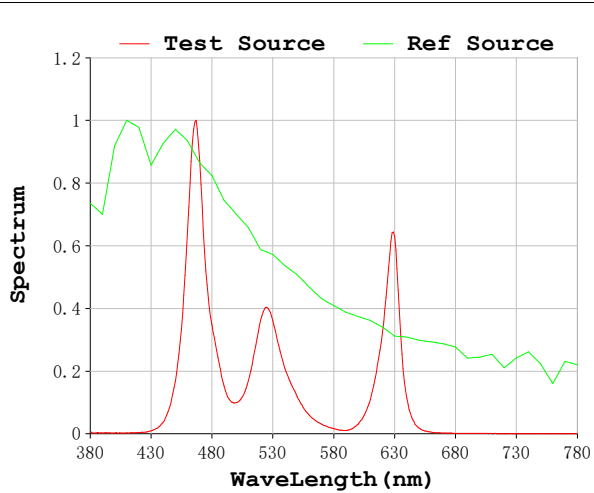
V = 23.998 V I = 0.7443 A P = 17.86 W PF = 1.000

Status: Integral T = 500 ms Ip = 50291 (77%)

Model:Ecoled Panel Flexible RGB  
Tester:Sergio Carneros  
Temperature:25Deg  
Manufacturer:Luz Negra

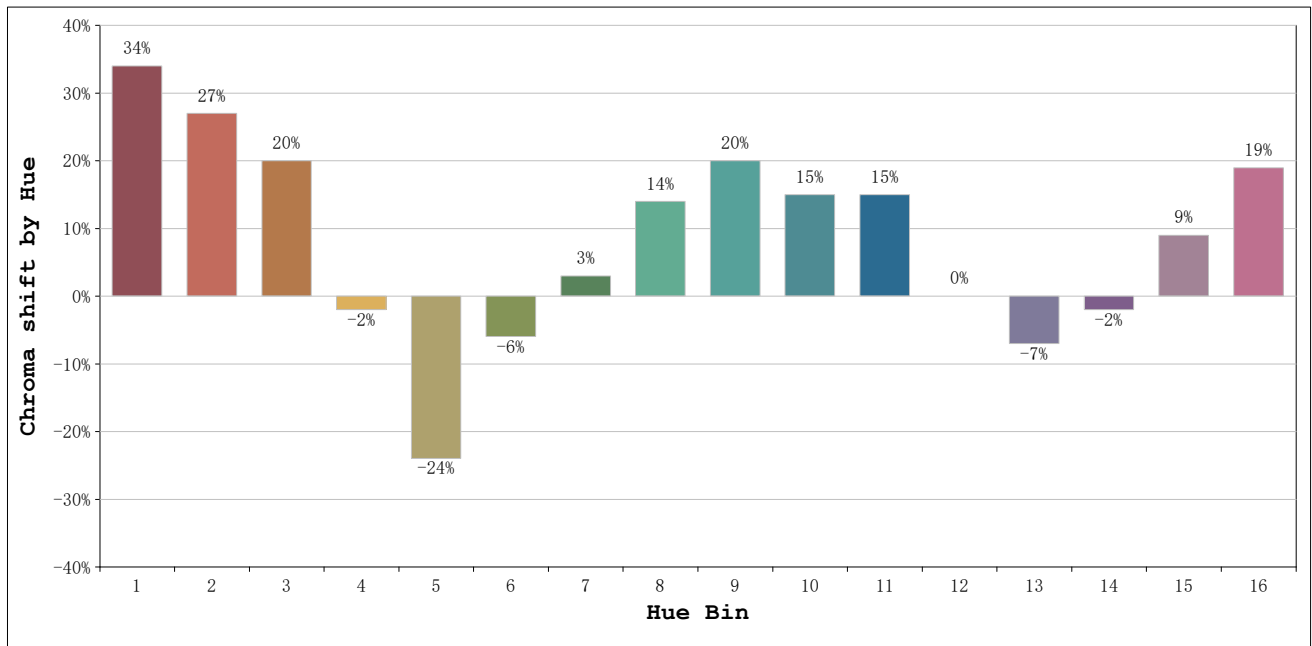
Number: 46.001 R+G+B  
Date:2026-06-10 09:00:31  
Humidity:57%  
Remarks:Panel 480 x 240mm

**Rf: 49**      **CCT: 17760 K**      **u': 0.1785**  
**Rg: 109**      **Duv: 0.0064**      **v': 0.4217**



Model:Ecoled Panel Flexible RGB  
 Tester:Sergio Carneros  
 Temperature:25Deg  
 Manufacturer:Luz Negra

Number: 46.001 R+G+B  
 Date:2026-06-10 09:00:31  
 Humidity:57%  
 Remarks:Panel 480 x 240mm



Hue Bin	Hue Angle	Rf	Graphic shift(%)	
			Chroma	Hue
1	0.0° - 22.5°	29	34	5
2	22.5° - 45.0°	12	27	-21
3	45.0° - 67.5°	33	20	-44
4	67.5° - 90.0°	19	-2	-37
5	90.0° - 112.5°	45	-24	-17
6	112.5° - 135.0°	75	-6	7
7	135.0° - 157.5°	66	3	15
8	157.5° - 180.0°	54	14	17
9	180.0° - 202.5°	67	20	14
10	202.5° - 225.0°	65	15	-4
11	225.0° - 247.5°	64	15	-13
12	247.5° - 270.0°	46	0	-24
13	270.0° - 292.5°	68	-7	-11
14	292.5° - 315.0°	48	-2	22
15	315.0° - 337.5°	49	9	27
16	337.5° - 360.0°	42	19	19

Model:Ecoled Panel Flexible RGB  
 Tester:Sergio Carneros  
 Temperature:25Deg  
 Manufacturer:Luz Negra

Number: 46.001 R+G+B  
 Date:2026-06-10 09:00:31  
 Humidity:57%  
 Remarks:Panel 480 x 240mm